

Cross over jersey

Level of difficulty



Time required

2 hours

© Elna International Corp. SA, all rights reserved



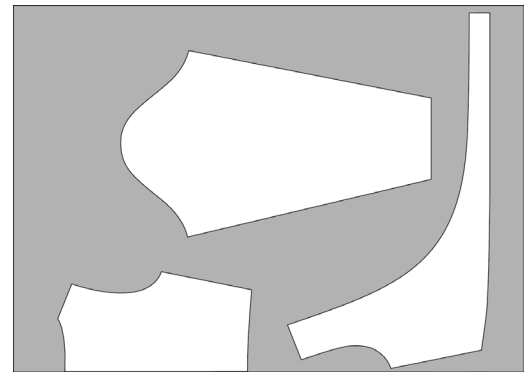
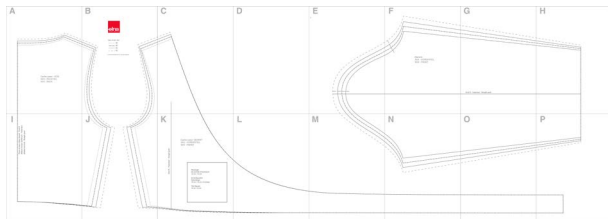
Materials

- 1 ½ yards of 60 inch wide stretch jersey
- four thread cones matched to the fabric
- chalk, pins, needle, scissors
- iron

Accessories

- eXtend 664PRO
- easycover
- Transparent foot for cover hem (Ref. 795-818-118)

Method



Pliore du tissu-Stoffbruch-Fold

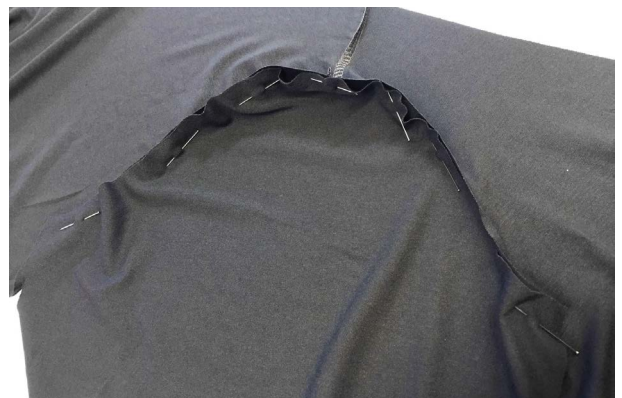
1. Download the Pattern PDF on this page under Pattern. To start, only print the page with the selection window. Using a ruler check that the window measures exactly 4 inches X 4 inches, then print the remaining pages.

The pattern is composed of several sheets that must be gathered using the markers (letters and lines). Once the pattern is gathered, adapt the pattern to fit your measurements and cut the pieces.

2. Fold the fabric in half, right side up, selvedge over selvedge and secure with pins. Place the pattern on the fabric, center back on the fold of the fabric and cut the fabric leaving a ¼ inch seam around the pattern.



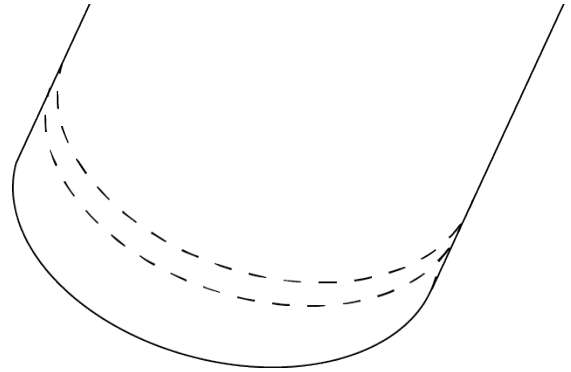
3. Right side up, pin the shoulder seams and use the 4-thread overlock stitch to tack these together.



4. Right side up, pin the shoulder seams and use the 4-thread overlock stitch to tack the rounded part of the sleeve and the armhole together.



5. Starting at the armpit point, right side up pin the back and front side of the body, as well as the sides of the sleeves. Use the 4-wire overlock assembly stitch to gather.



6. Fold over 5/8 inch sleeve cuffs and pin. Program the 3-wire cover stitch (large) on the easycover, install the transparent foot and sew on the right side of the fabric at 5/8 inch from the edge.



7. Fold the hem of the neck by 3/8 inch, pin the hem and hold it with a large basting stitch 1/4 inch from the edge.



8. Program the 3-wire cover stitch (narrow) on the easycover and sew on the right side of the fabric at 1/4 inch from the edge.



9. Fold the hem of the body by 5/8 inch, pin it to the hem and hold it with a large basting stitch at 1/4 inch from the edge. Program the 3-thread stitch cover (large) on the easycover and sew on the side of the fabric 5/8 inch from the edge.



10. Clean finish the external edge of the tape measure. Fold by 1/8 - 1/4 inch and stitch in place by hand. Once finished, gently iron the top. And you're done! Congratulations, your crossover is ready!