

Tote bag with decorate appliqué

Level of difficulty



Time required

2-3 hours

© Elna International Corp. SA, All rights reserved.



Material

For the tote bag

- 2 x 45 x 41 cm (2 17.7 x 16.15 inch pieces) of linen or cotton fabric in different colors
- 2 coordinating sewing threads
- 2 leather or imitation leather bag handles
- Matching buttonhole thread, if needed for handles

For the pocket

- 20 x 14.5 cm (7.9 by 5.7 inches) from the printed cotton
- 20 x 19 cm (7.9 by 7.5 inches) from your preferred linen

For the appliqué

- You can use your feather embroidery (see corresponding tutorial) or instead us a colored or patterned fabric of your choice in your favorite dimensions

Machines and accessories

- elna electronic sewing machine. In this tutorial, we use the eXcellence 680+ *special anniversary edition*.
- Standard foot A



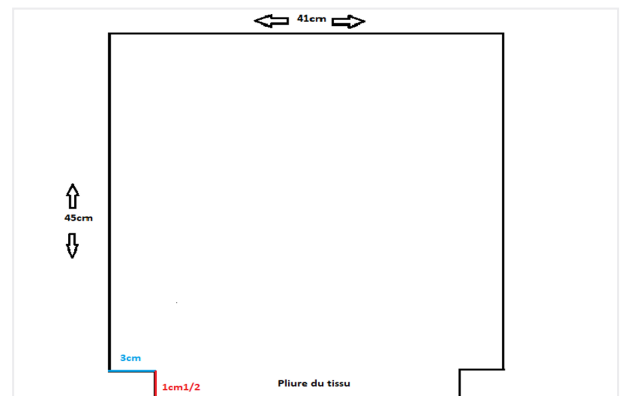
1. To prepare

Tote bag

Fold the linen pieces in half right sides together
A 1.5 cm (.6 inches) seam is included in the pattern, place it on the fold of the fabric and cut along the edge.
Cut 1x for the outside of the bag and 1x for the lining.

Pocket

Cut 1 x 20x 19 cm (7.9 by 7.5 inches) from your preferred linen
Cut 1 x 20 x 14.5 cm (7.9 by 5.7 inches) from the printed cotton



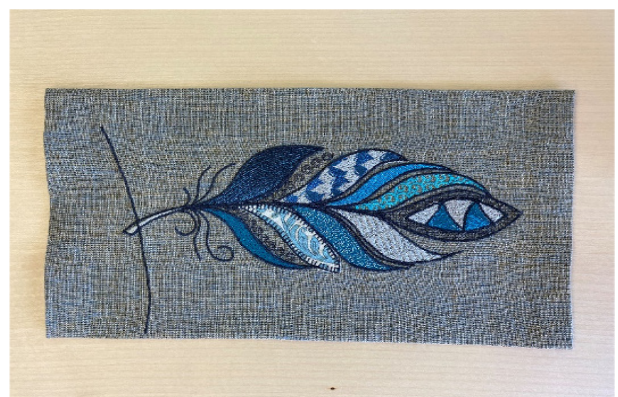
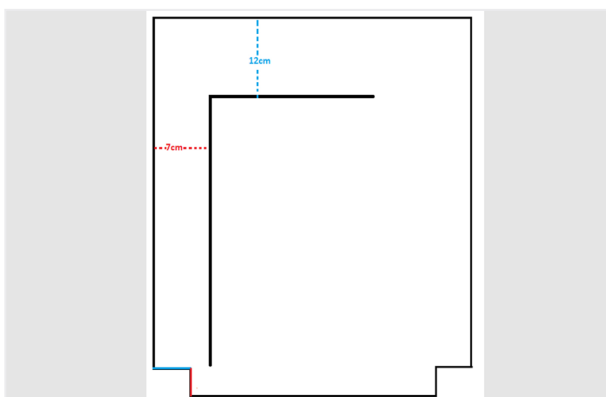
2. Method

Overcast all the way around your linen pieces with a zigzag stitch.

On the back fold under 1.5 cm (.6 inches) all the way around the embroidery and iron it.

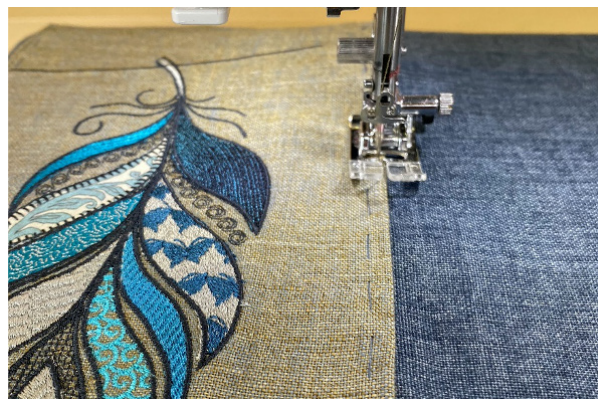
On the fabric you have chosen for the outside of your bag, using tailor's chalk or a pencil draw one line 7 cm (2.8 inches) from the left edge and another line 12 cm (4.7 inches) line from the top of the bag.

Pin and tack the embroidery on the line.



Stitch 2 mm (.079 inches) from the edge.

To make it easier to follow your tacking and sew in a straight line, position the edge of your appliqué at the centre of your presser foot and offset your needle to the left.



Pocket

Place the two pocket pieces right sides together.

Sew 1 cm (.4 inches) from the edge along the width leaving an opening of a few cm (or inches) in the middle, this will help you turn your pocket out.

Push your seam back towards the linen and iron.

Fold your linen over 3 cm (1.2 inches) and sew all the way around 1 cm (.4 inches) from the edge, clip the corners, making sure to not cut into the stitching line.

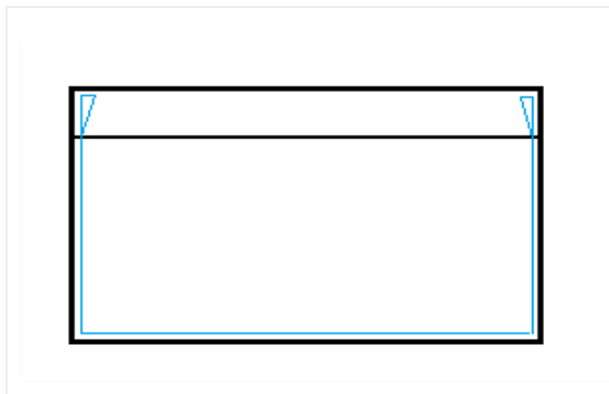


Turn the pocket inside out and iron flat, making sure to press the seam closed where you left the hole.

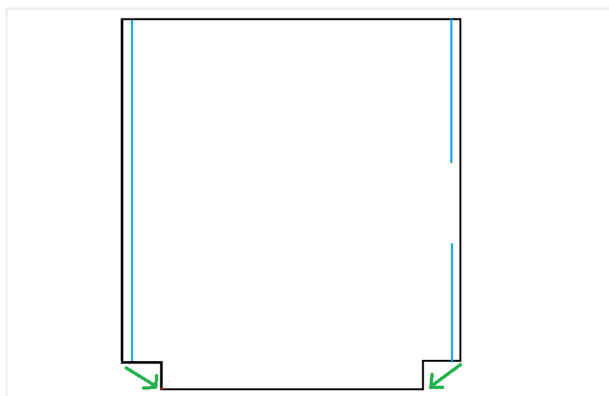
Topstitch along the linen a few mm from the edge (1/8 of an inch from the edge). This will close the opening.



On one side of your lining, draw a line 15 cm (5.9 inches) from the top edge.
Draw a vertical line in the center.
Mark the centre of the pocket and pin it on the marks, tack if necessary.
Sew a few mm from the edge (1/8 inch from the edge).



Right sides together, fold the fabric of the bag and the lining in half.
Sew the sides 1.5 cm (.6 inches) from the edge, you can use the guidelines on the needle plate of your sewing machine.
On one side of the lining, leave a 7 to 8 cm (2.8 to 3.2 inches) opening for turning the bag out.
Iron the seams open.
Fold the corners by placing the side seams in the center.
Sew with a triple stitch.



Place the two parts of the bag one inside the other and right sides together.
Sew all the way around 1.5 cm (.6 inches) from the edge.
Turn the bag out through the opening left in the lining.
Close the opening with a few pins and sew along the edge.



Iron the edge of your bag pushing the lining slightly inside.
Topstitch all the way around a few mm from the edge (1/8 inch from the edge).
Depending on your handles and preferences, mark the position on the bag and attach them with the buttonhole thread.
For this model, the handles are placed 10 cm (3.9 inches) from the side seams.



Congratulations, your tote bag is ready!