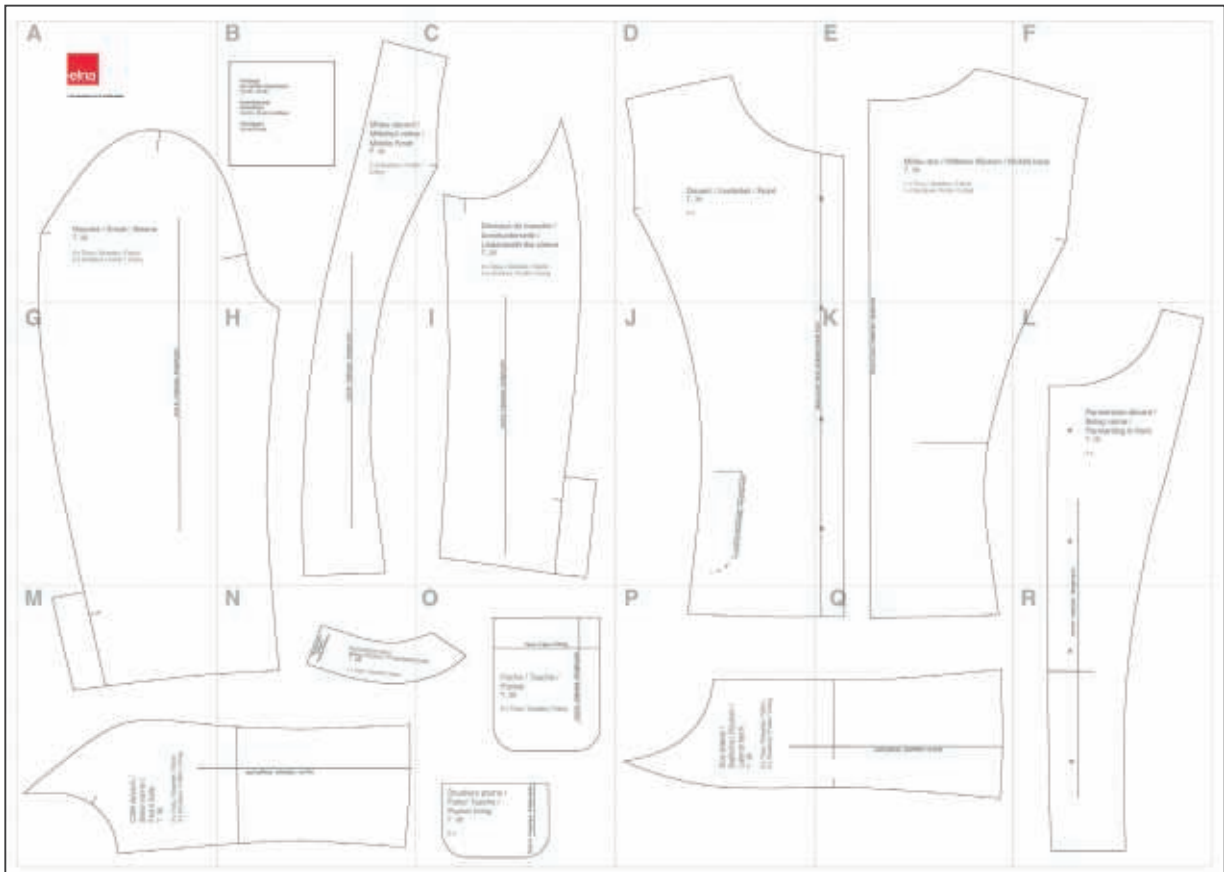


La veste tailleur classique
Klassische Jacke
The classic suit jacket

Taille / Größe / Size: 38



This pattern doesn't include seam allowance

A

© Elna International Corp. SA, all rights reserved



Manche / Ärmel / Sleeve
T. 38

2 x Tissu / Gewebe / Fabric
2 x Doublure / Futter / Lining

C

B

Rectangle
de contrôle d'impression
10 cm / 10 cm

Kontrollquadrat
Seitenlänge
10 cm / 10 cm (4 inches)

Test Square
10 cm / 10 cm

Milieu devant /
Mittelteil vorne /
Middle Front
T. 38

2 x Doublure / Futter /
Lining

H

C

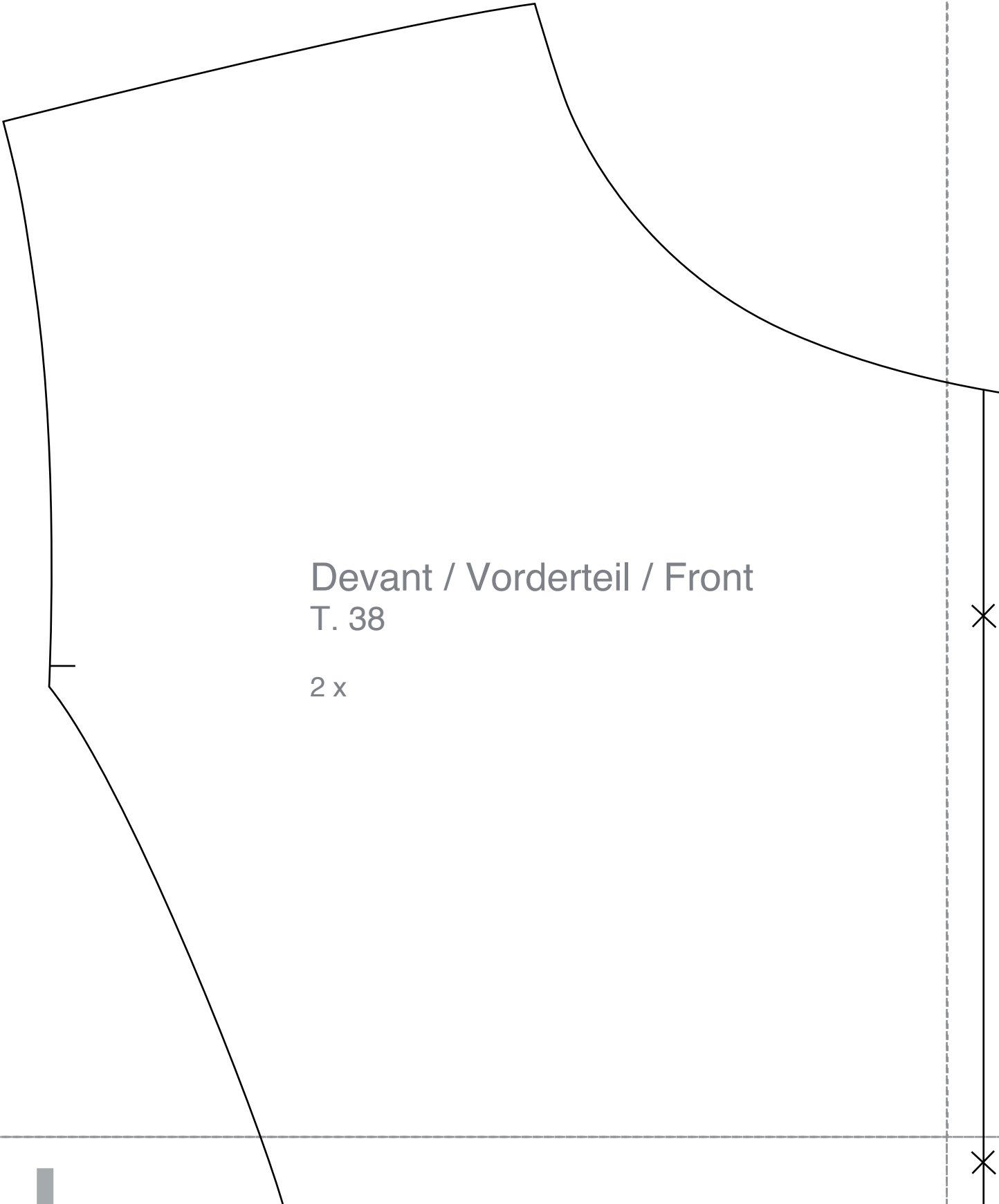
ant /
rne /
nt

Futter /

Dessous de manche /
Ärmelunterseite /
Underneath the sleeve
T. 38

2 x Tissu / Gewebe / Fabric
2 x Doublure / Futter / Lining

D



Devant / Vorderteil / Front
T. 38

2 x

×

×

E

Milieu dos / Mittlerer Rücken / Middle
T. 38

1 x Tissu / Gewebe / Fabric
1 x Doublure / Futter / Lining

X

X

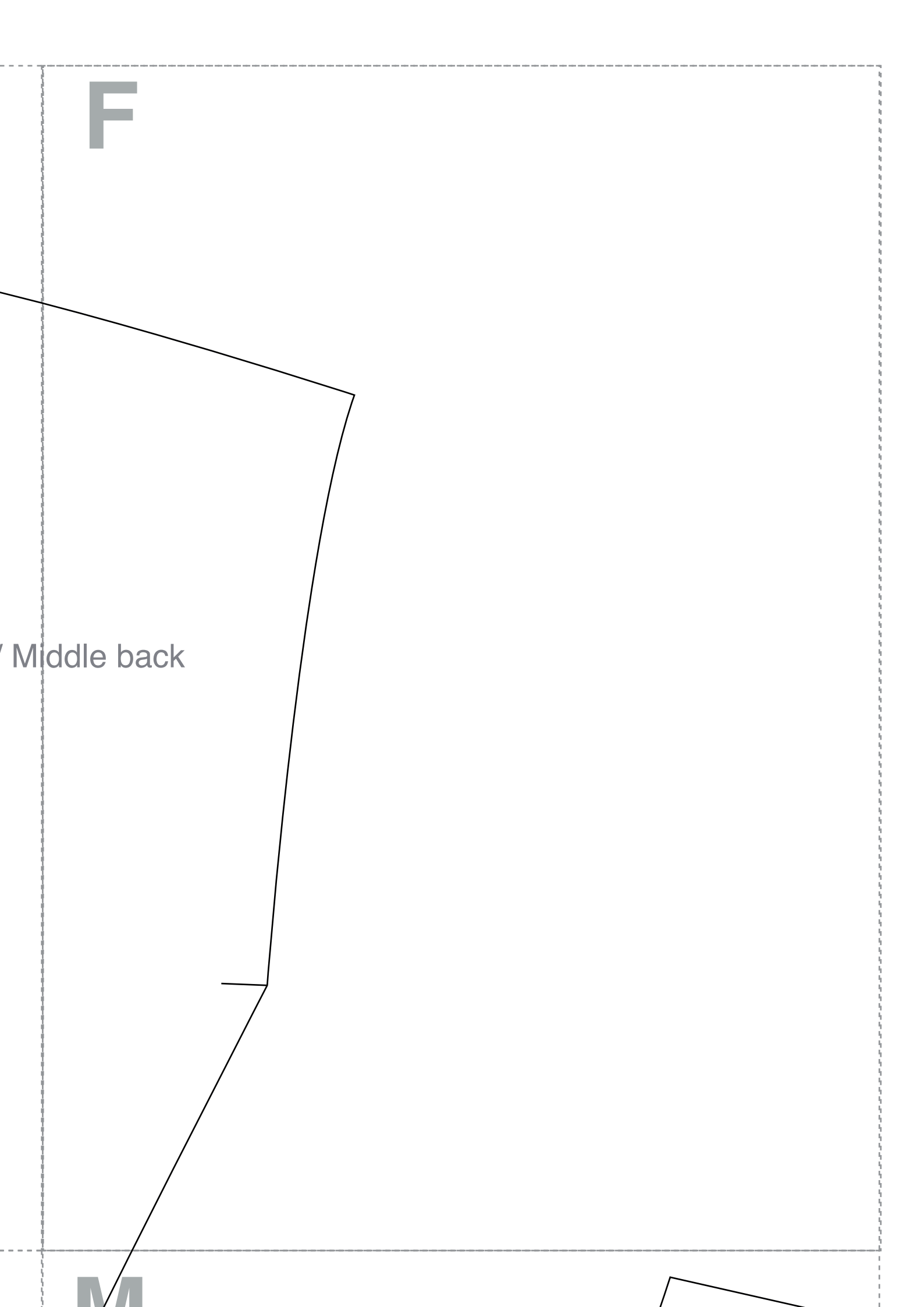
K

Middle fold

F

Middle back

M



G

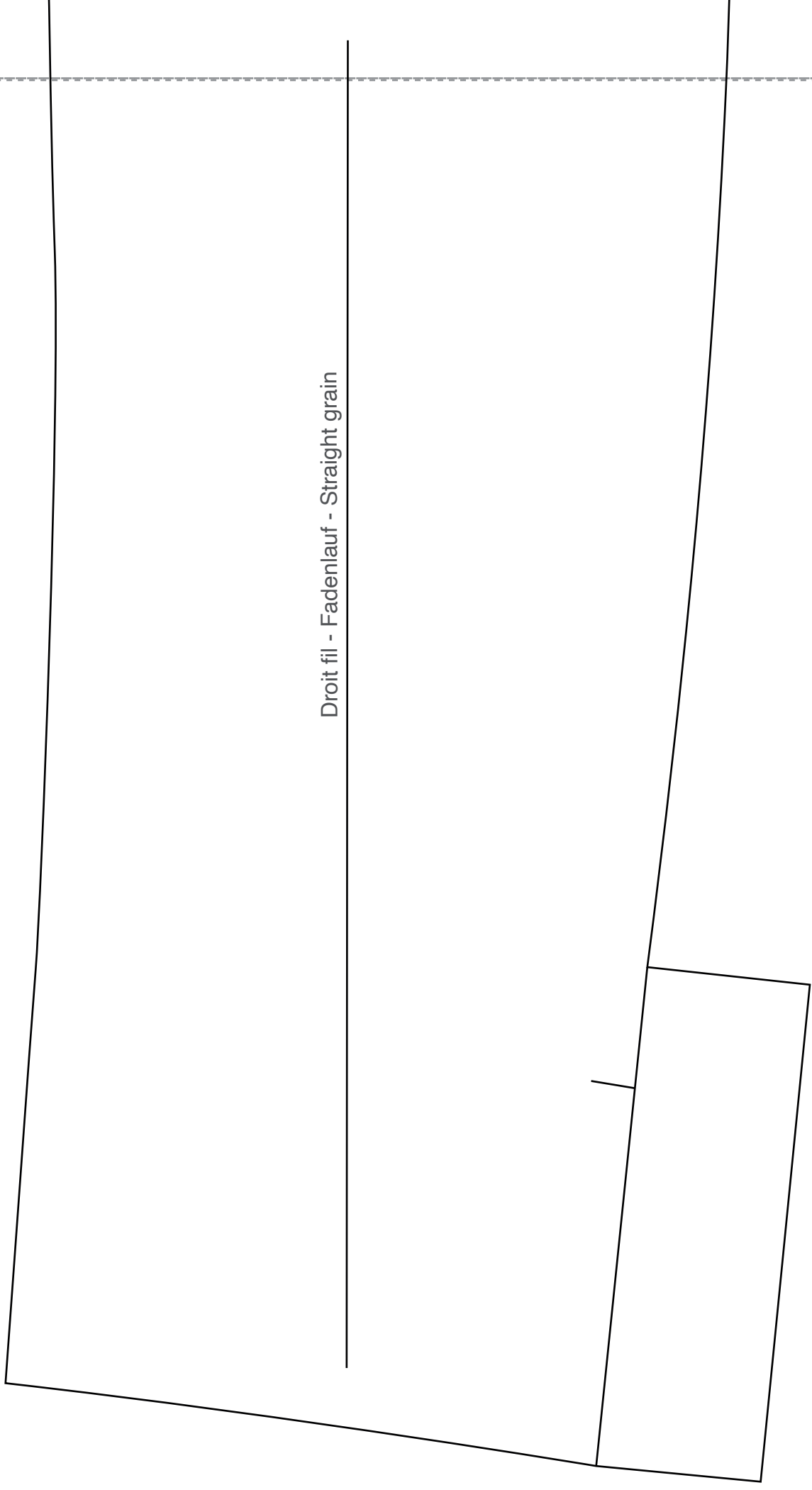
N

Droit fil - Fadenlauf - Straight grain

H

Droit fil - Fadenlauf - Straight grain

C



Droit fil - Fadenlauf - Straight grain

J

P

Ligne de poche / Taschenlinie / Pocket line

Milieu devant / Mitte Vorderteil / Middle Front

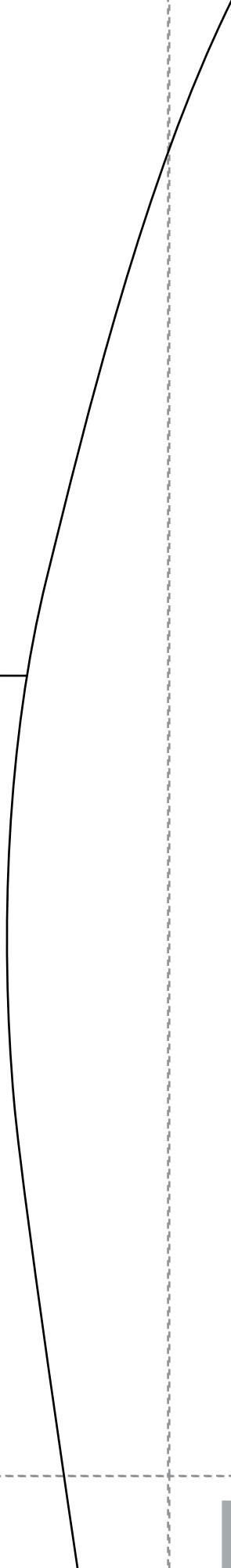
Milieu devant / Mitte Vorderteil / Middle Front



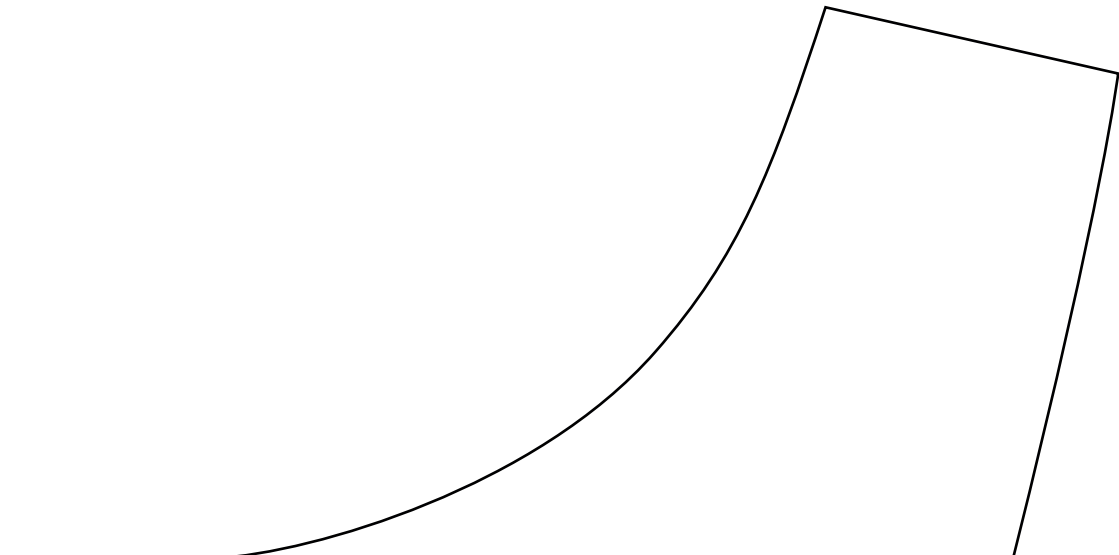
K



Pliure du tissu / Stoffbruch / Middle fold



L



×

Parmenture devant /
Beleg vorne /
Parmenting in front
T. 38

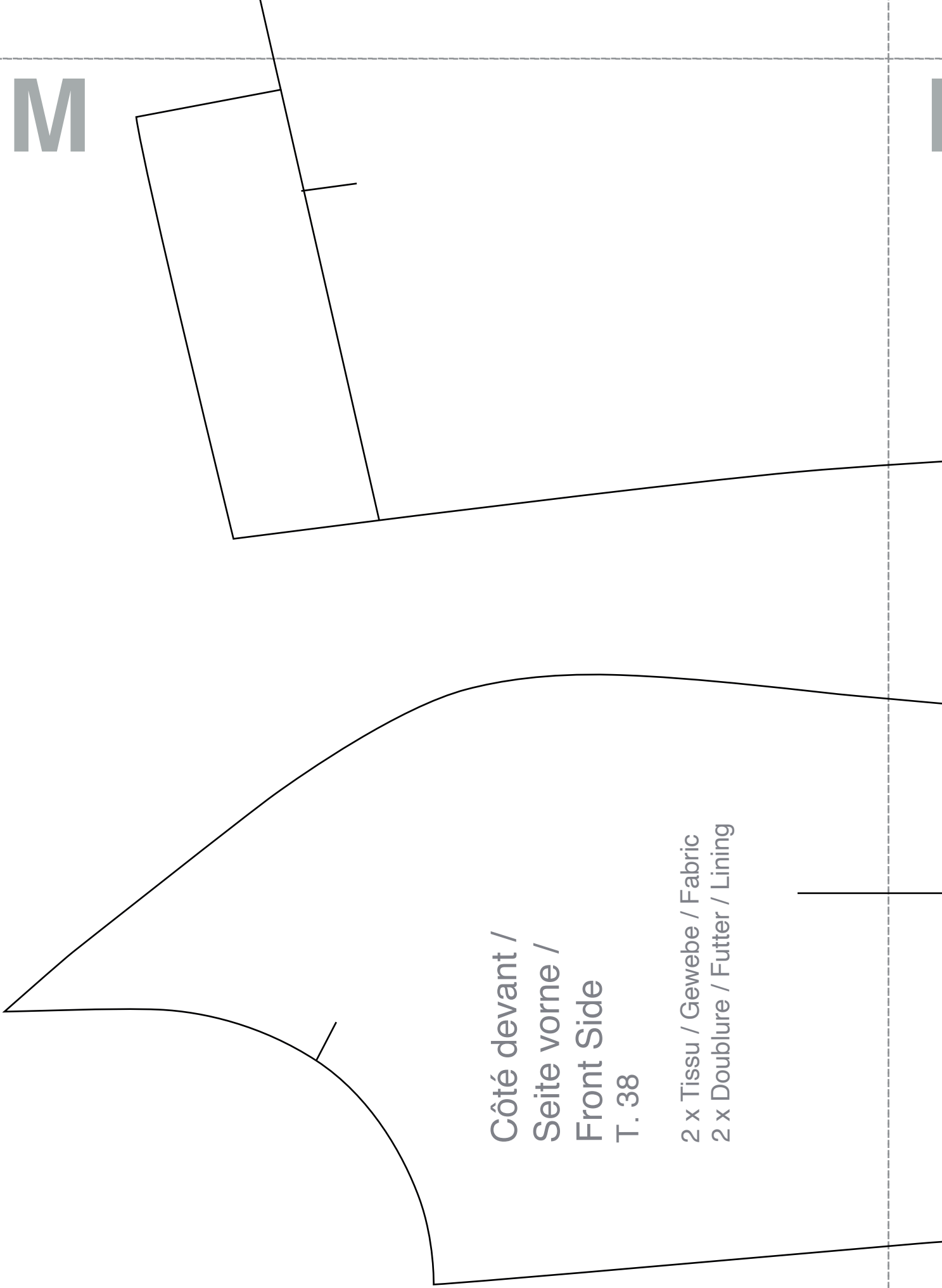
2 x

×

— - Straight grain

D

M



Côté devant /
Seite vorne /
Front Side

T. 38

2 x Tissu / Gewebe / Fabric
2 x Doublure / Futter / Lining

N

Pliure du tissu /
Stofffalte /
Folding of the fabric

Parmenture dos /
Beleg Rücken / Parentation bac
T. 38

1 x Tissu / Gewebe / Fabric

Droit fil - Fadenlauf - Straight grain

O

ation back

Pliure / Falte / Folding

Poche / Tasche /
Pocket
T. 38

2 x Tissu / Gewebe / Fabric

Droit fil - Fadenlauf - Straight grain

Double poche /
Futter Tasche /
Pocket lining
T. 38

2 x

Droit fil - Fadenlauf - Straight grain

P

Dos lateral /
Seitlicher Rücken /
Lateral back

T. 38

2 x Tissu / Gewebe / Fabric
2 x Doublure / Futter / Lining

Q

F

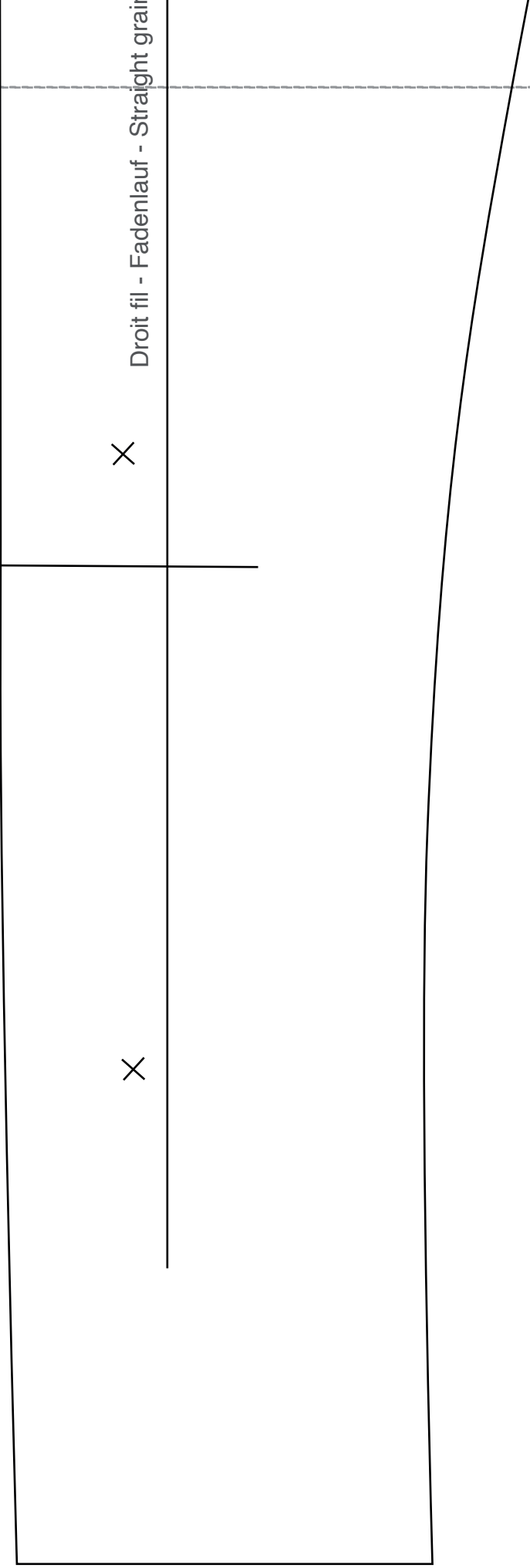
Droit fil - Fadenlauf - Straight grain

R

X

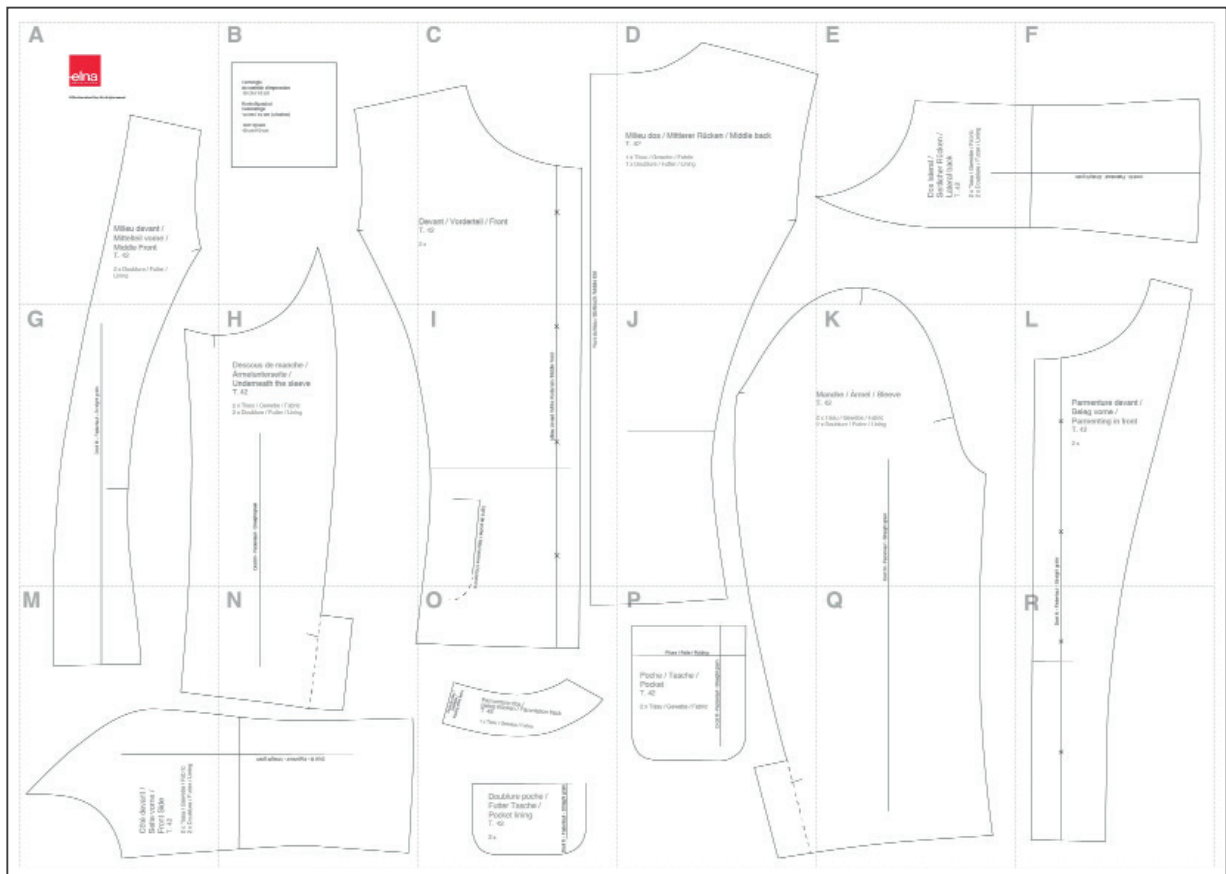
X

Droit fil - Fadenlauf - Straight grain



La veste tailleur classique
Klassische Jacke
The classic suit jacket

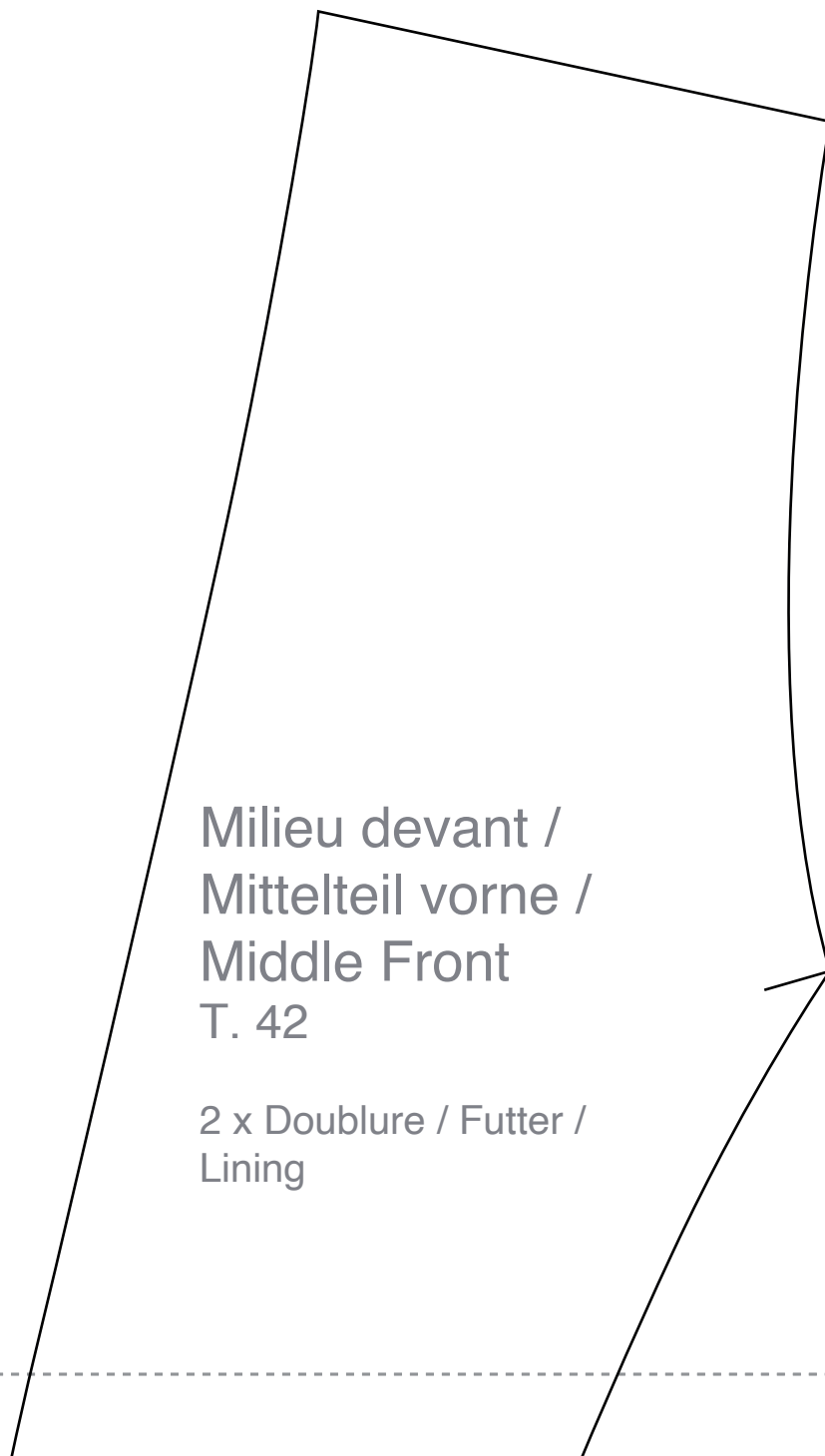
Taille / Größe / Size: 42



This pattern doesn't include seam allowance

A

© Eina International Corp. SA, all rights reserved

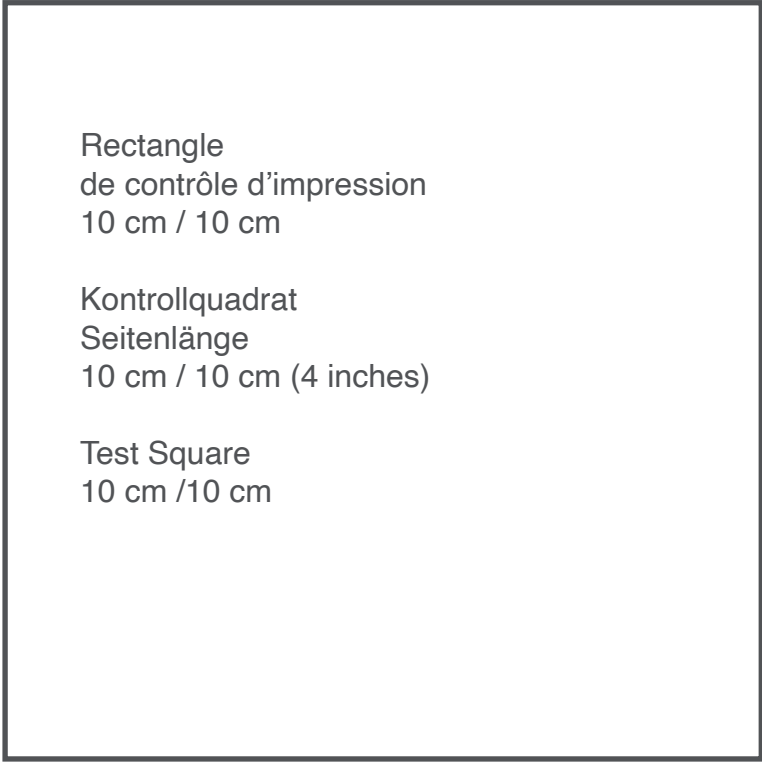


Milieu devant /
Mittelteil vorne /
Middle Front
T. 42

2 x Doublure / Futter /
Lining

G

B



Rectangle
de contrôle d'impression
10 cm / 10 cm

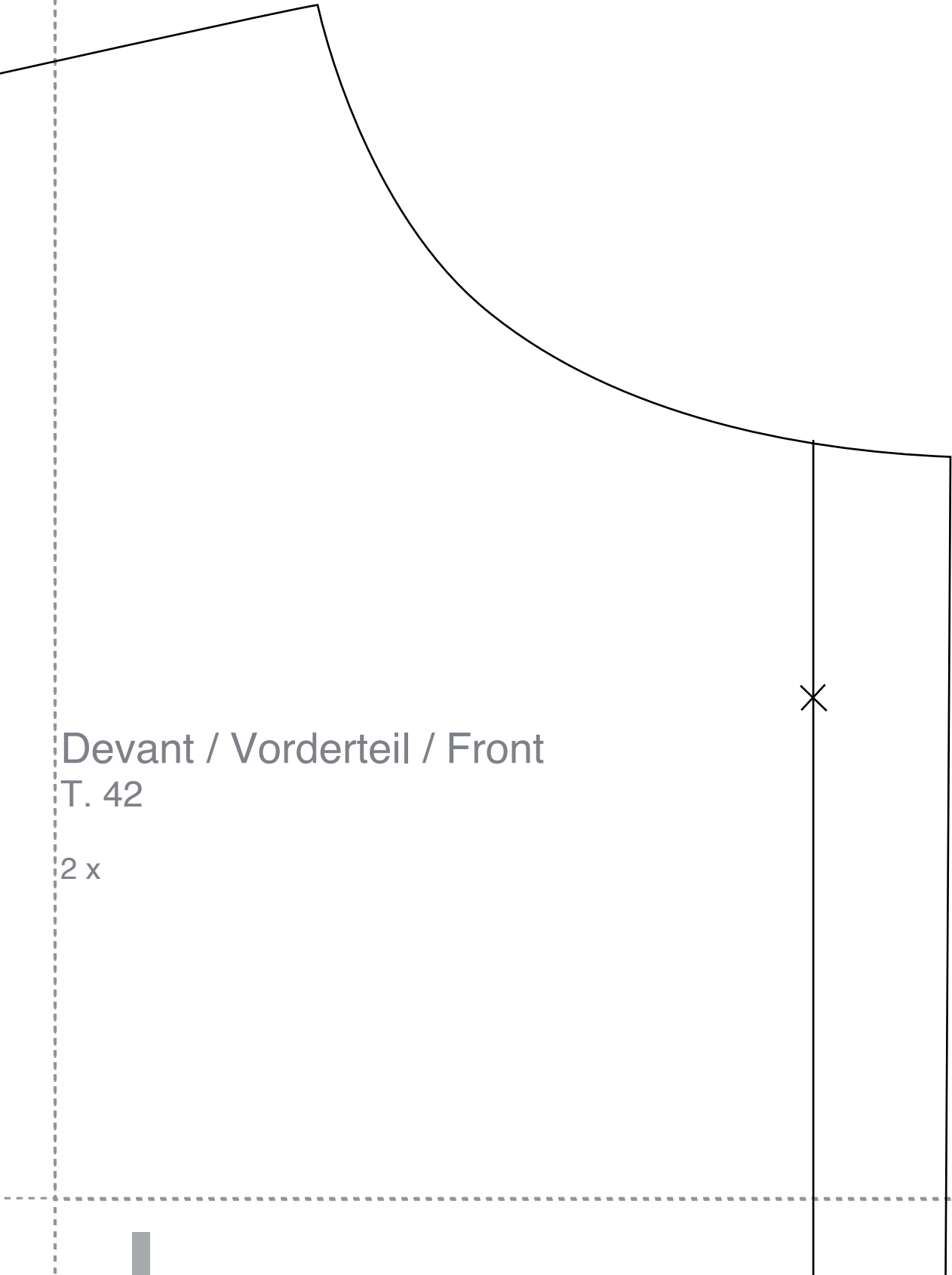
Kontrollquadrat
Seitenlänge
10 cm / 10 cm (4 inches)

Test Square
10 cm / 10 cm

De
T. 4
2 x

H

C



Devant / Vorderteil / Front
T. 42

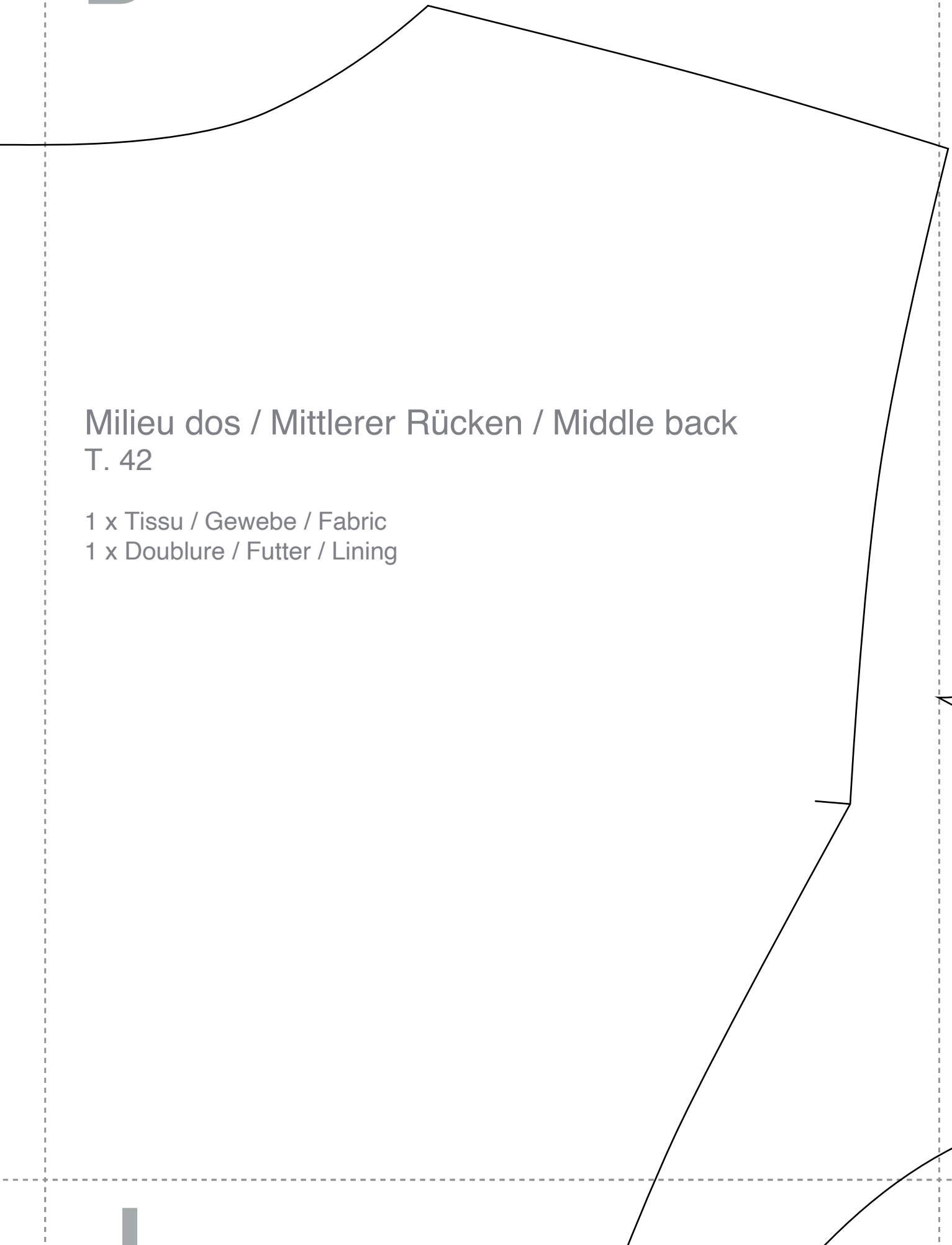
2 x

/ Mittlere Stoffbruch / Middle fold

D

Milieu dos / Mittlerer Rücken / Middle back
T. 42

1 x Tissu / Gewebe / Fabric
1 x Doublure / Futter / Lining



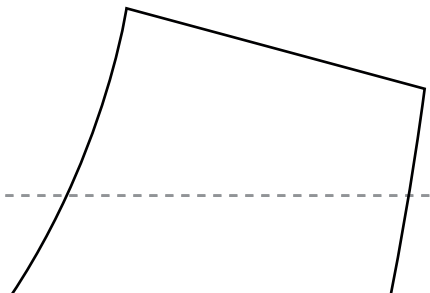
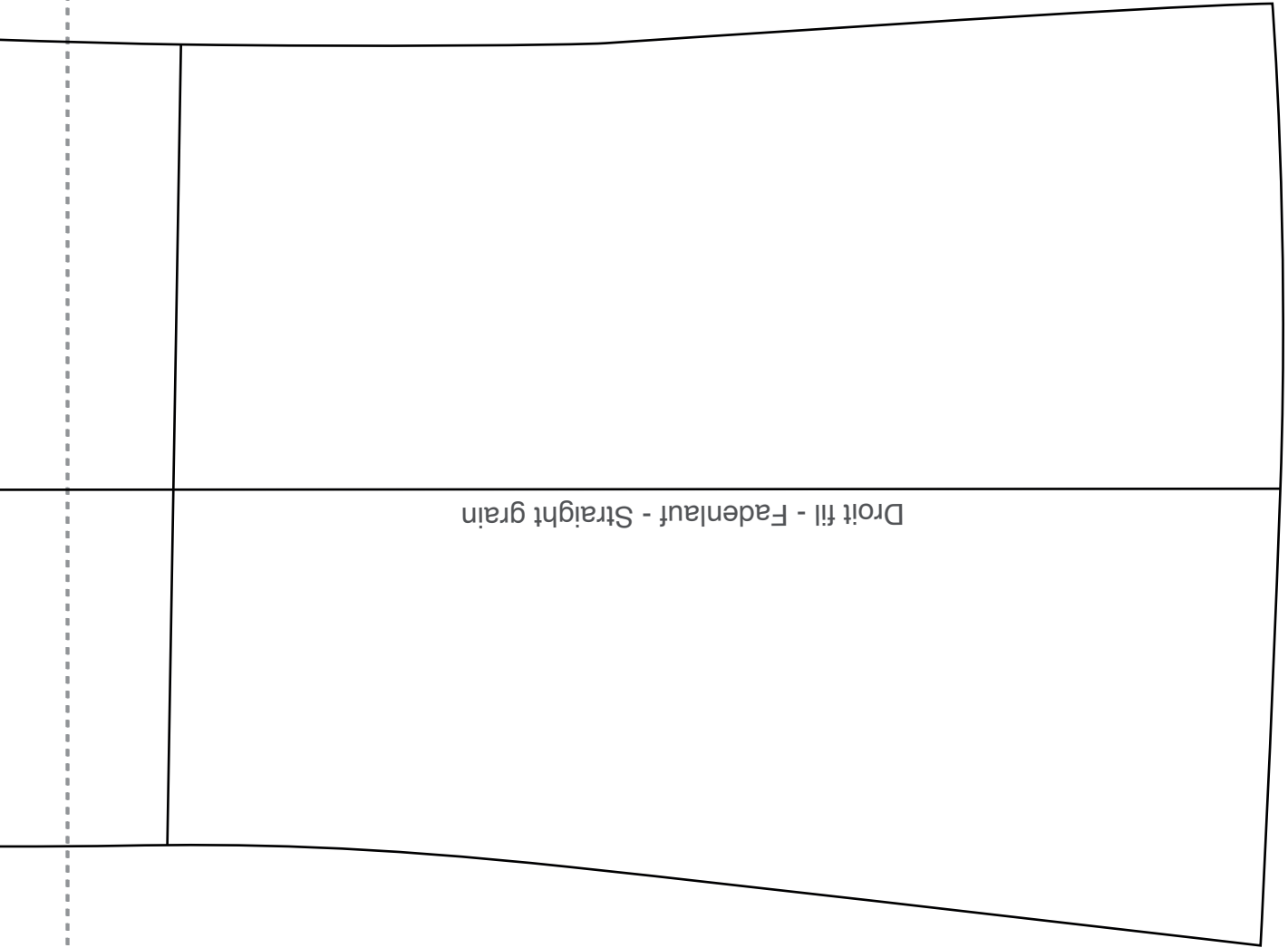
E

Dos lateral /
Seitlicher Rücken /
Lateral back

T. 42

2 x Tissu / Gewebe / Fabric
2 x Doublure / Futter / Lining

F

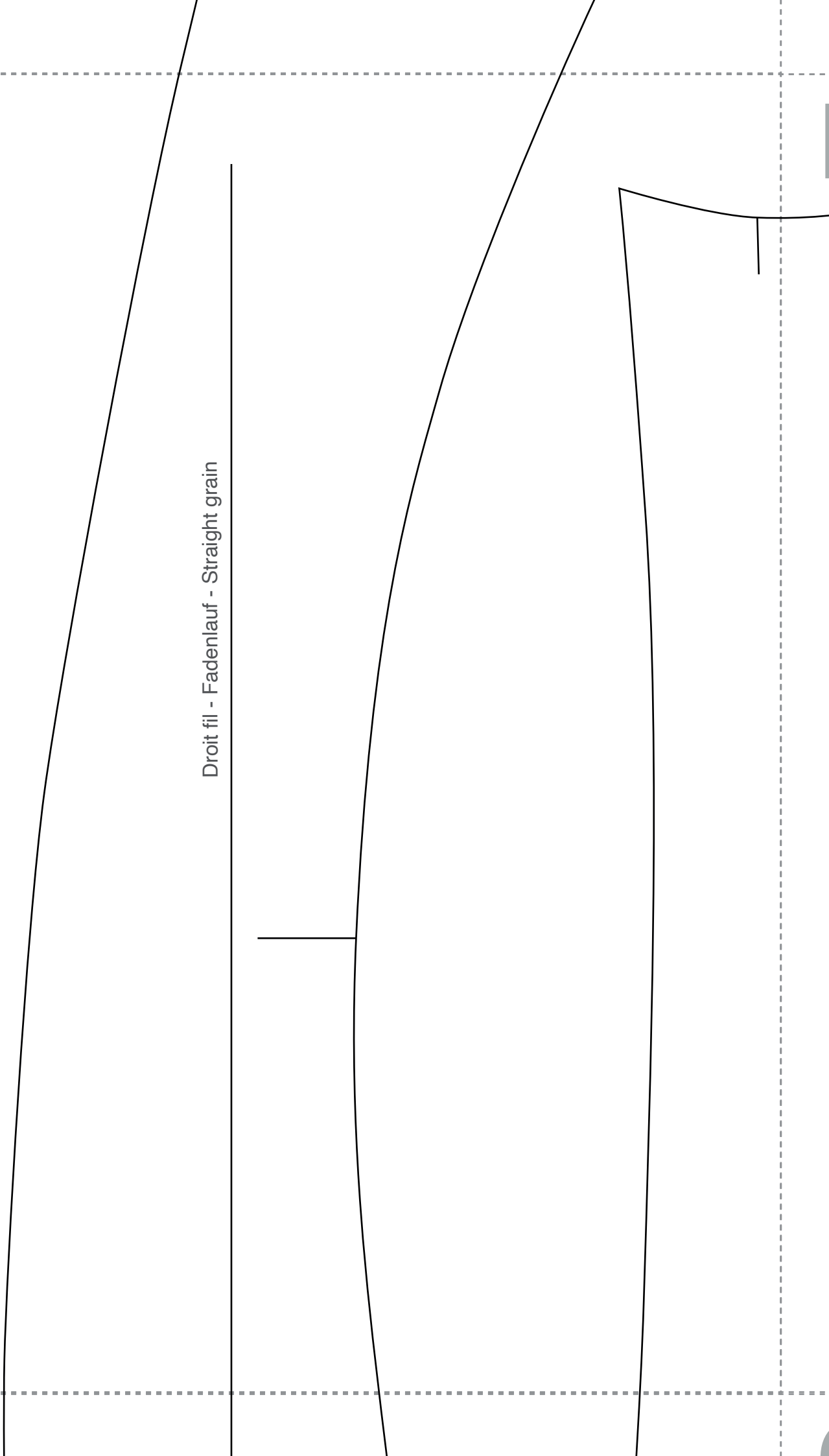


M

G

Droit fil - Fadenlauf - Straight grain

N



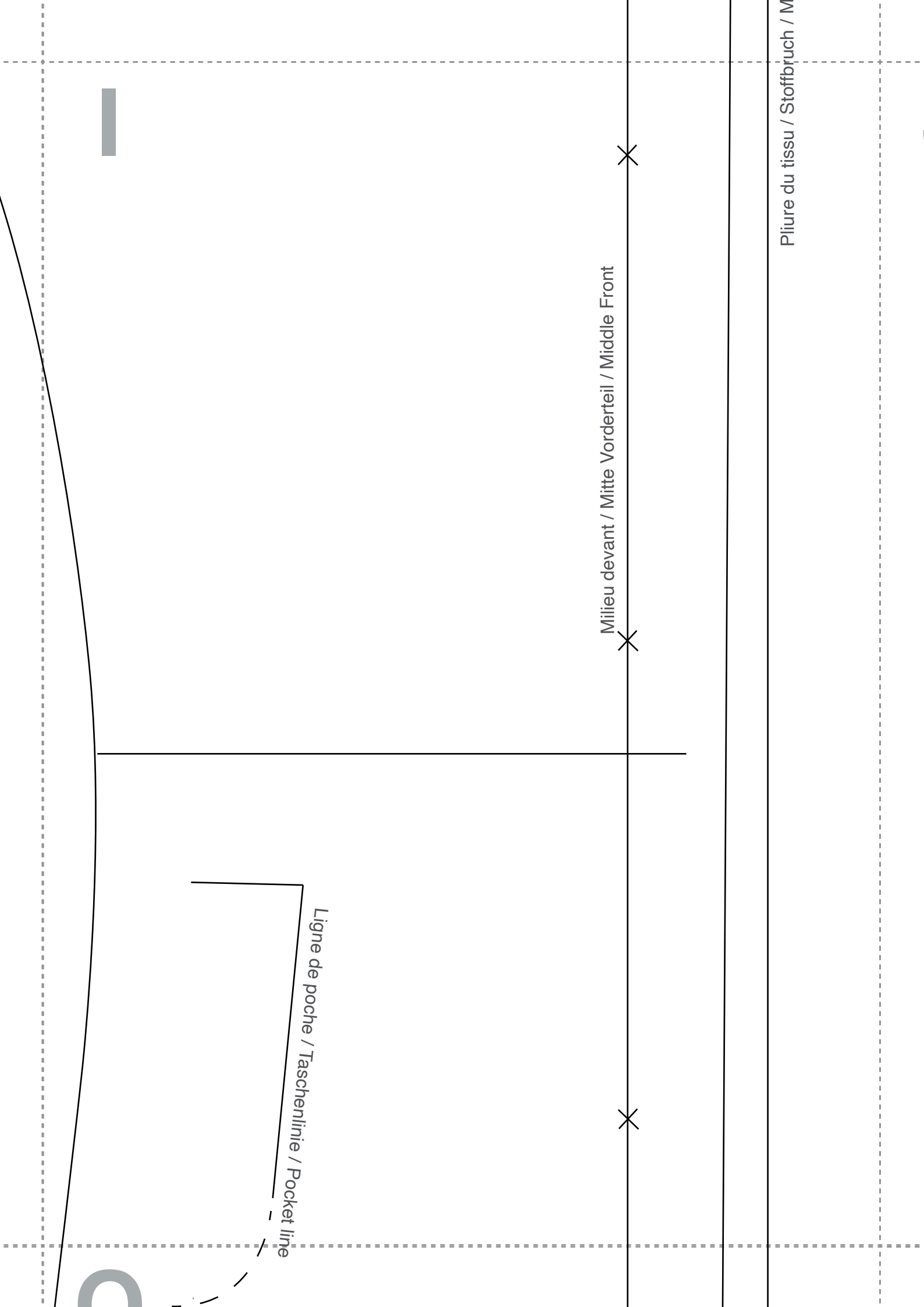
H

Dessous de manche /
Ärmelunterseite /
Underneath the sleeve
T. 42

2 x Tissu / Gewebe / Fabric
2 x Doublure / Futter / Lining

Droit fil - Fadenlauf - Straight grain

O



Milieu devant / Mitte Vorderteil / Middle Front

Ligne de poche / Taschenlinie / Pocket line

Pliure du tissu / Stoffbruch / M

J



O

Ma
T. 4
2 x 7
2 x 1

K

Manche / Ärmel / Sleeve

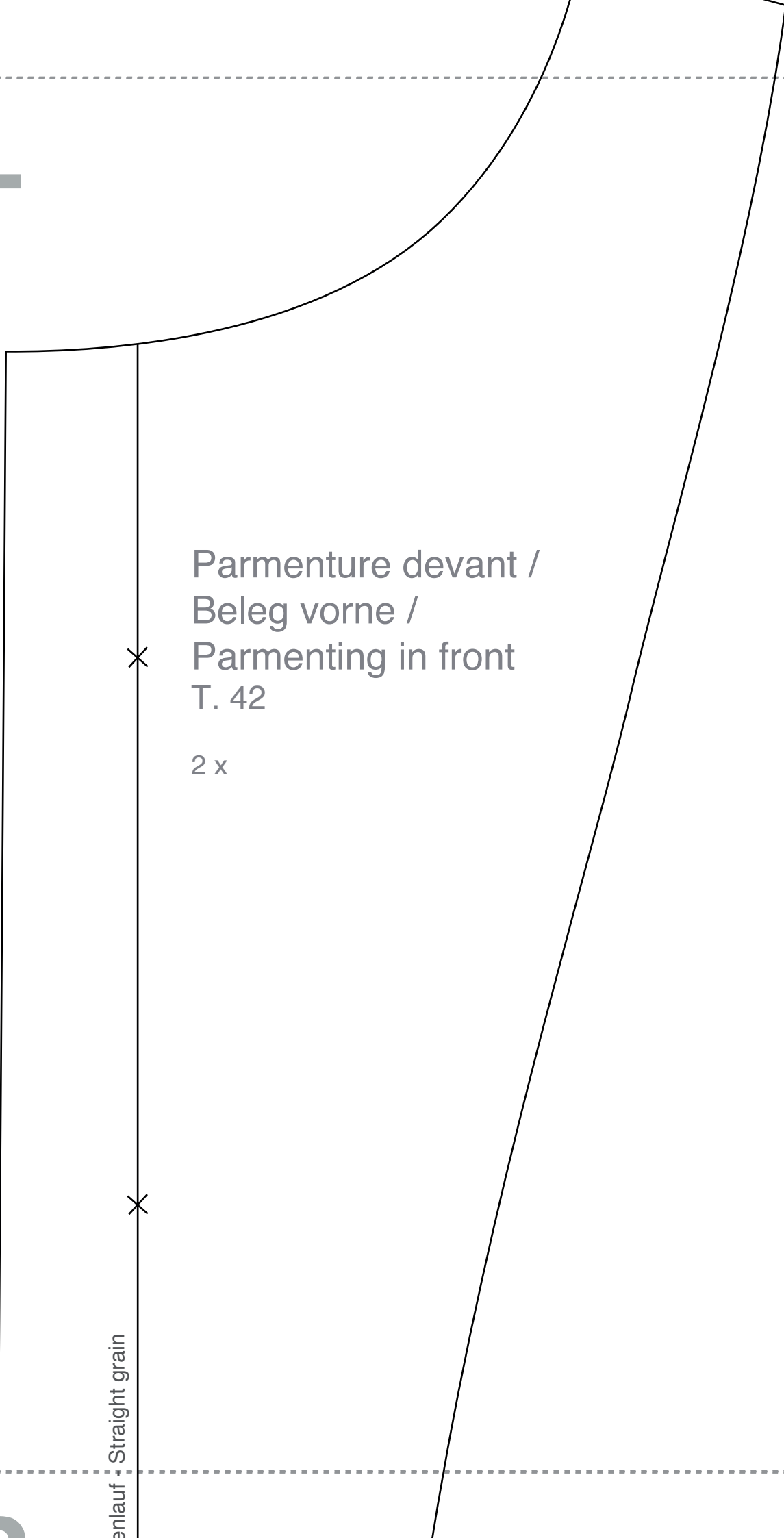
T. 42

2 x Tissu / Gewebe / Fabric

2 x Doublure / Futter / Lining

Droit fil - Fadenlauf - Straight grain

O



Parmenture devant /
Beleg vorne /
Parmenting in front
T. 42

2 x

enlauf - Straight grain

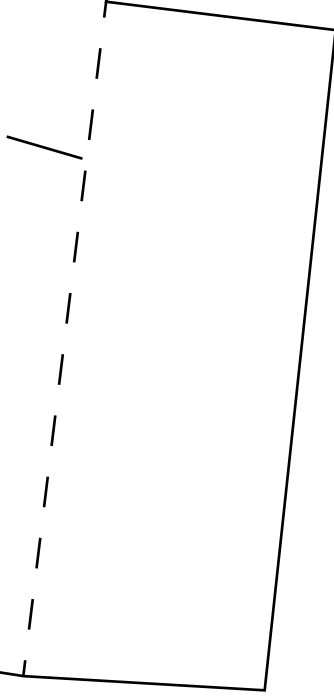


M

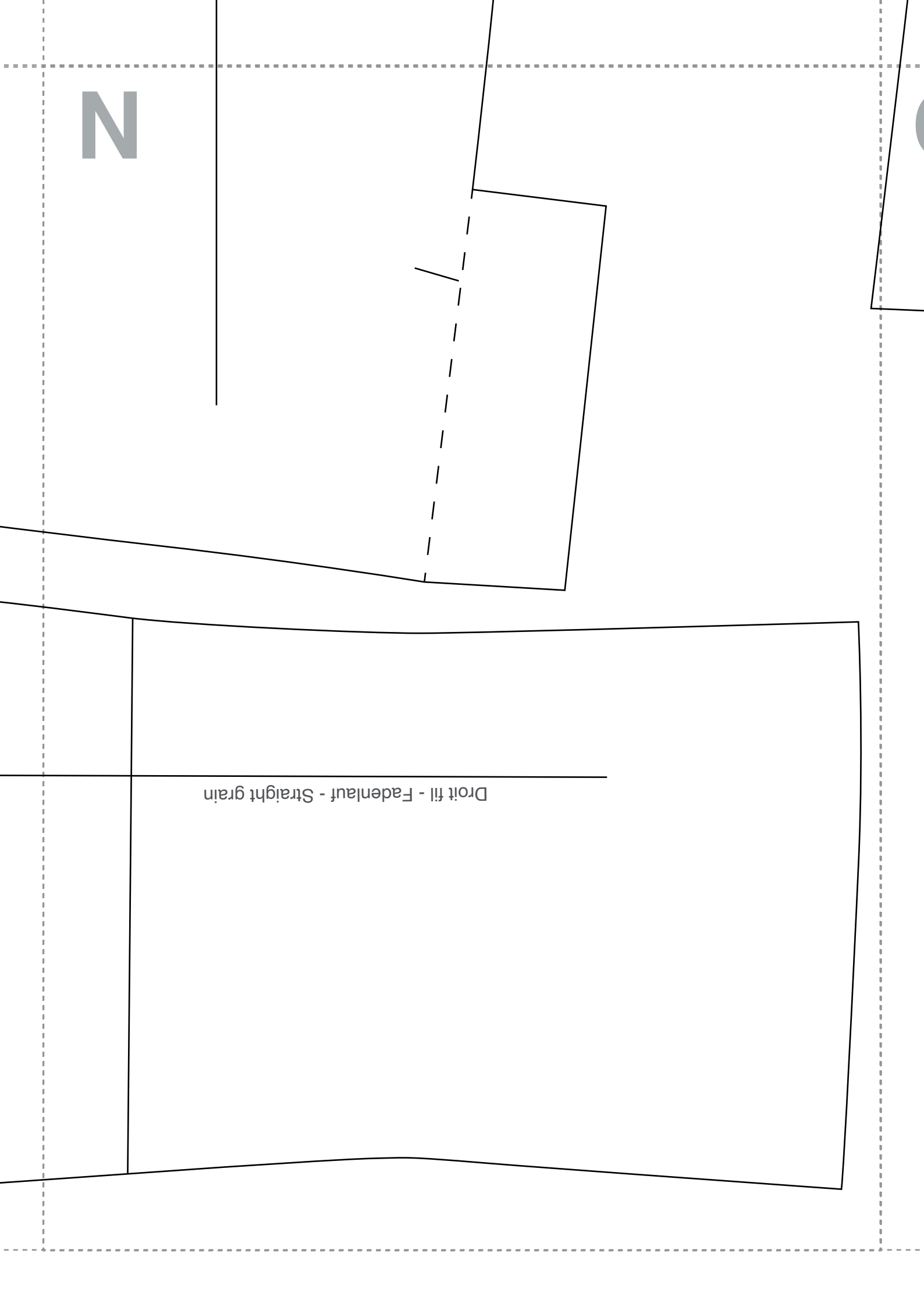
Côté devant /
Seite vorne /
Front Side
T. 42

2 x Tissu / Gewebe / Fabric
2 x Doublure / Futter / Lining

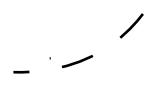
N



Droit fil - Fadenlauf - Straight grain



Pocket line



Pliure du tissu /
Stofffalte /
Folding of the fabric

Parmenture dos /
Beleg Rücken / Parentation back
T. 42

1 x Tissu / Gewebe / Fabric

Doublure poche /
Futter Tasche /
Pocket lining
T. 42

2 x

Droit fil - Fadenlauf - Straight grain

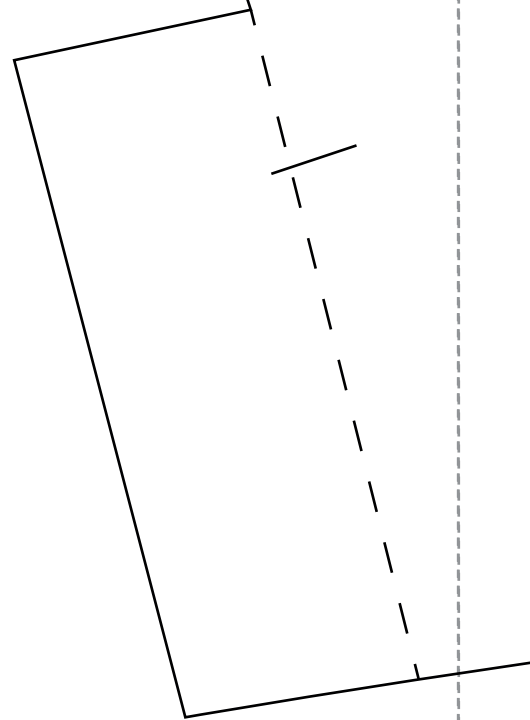
P

Pliure / Falte / Folding

Poche / Tasche /
Pocket
T. 42

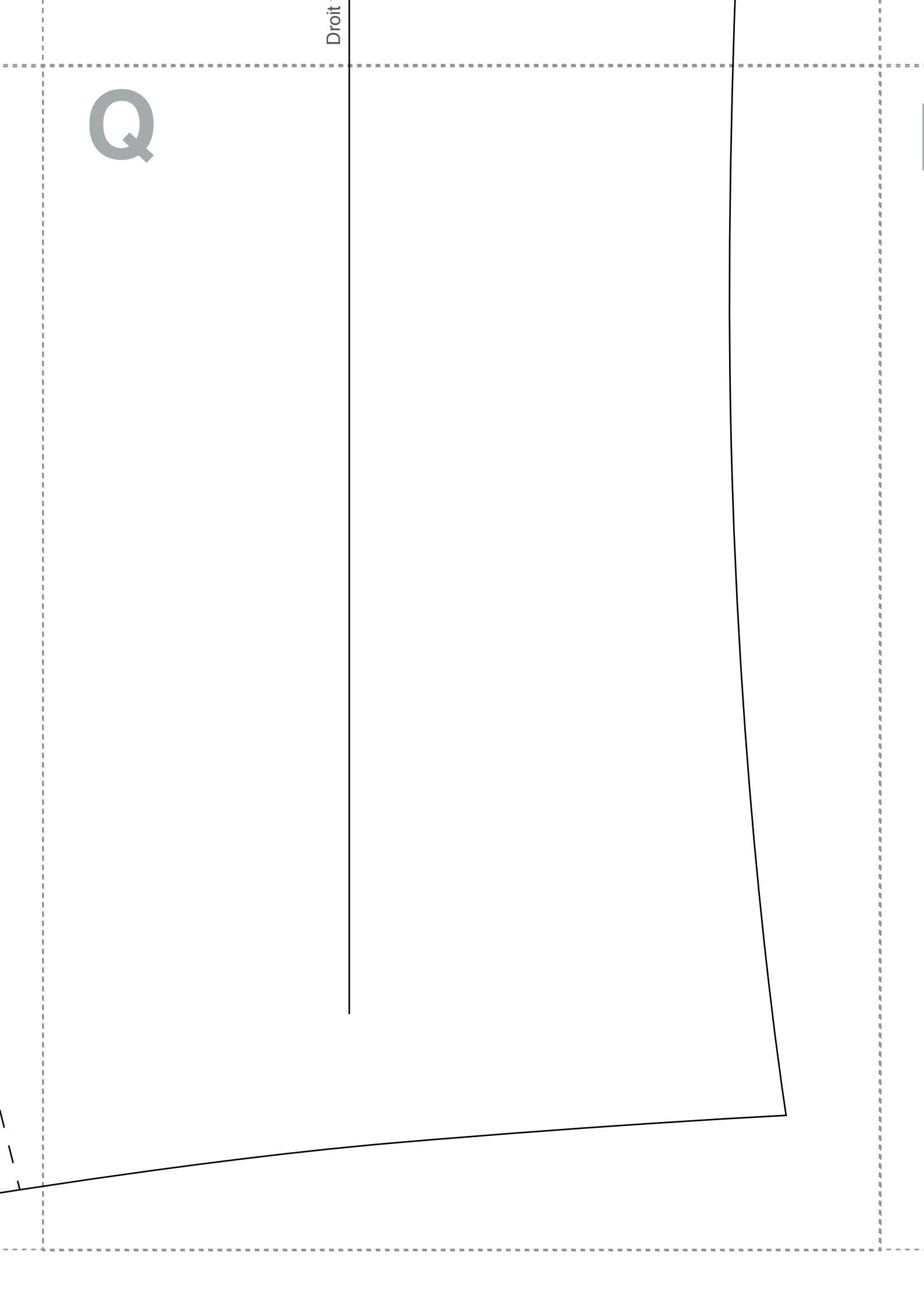
2 x Tissu / Gewebe / Fabric

Droit fil - Fadenlauf - Straight grain



Q

Droit



R

Droit fil - Fadenlauf - Straight

